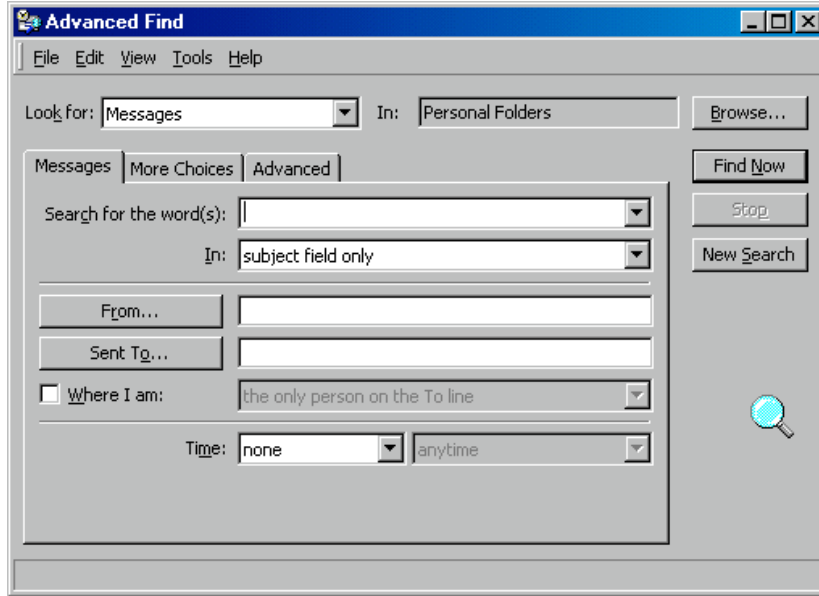
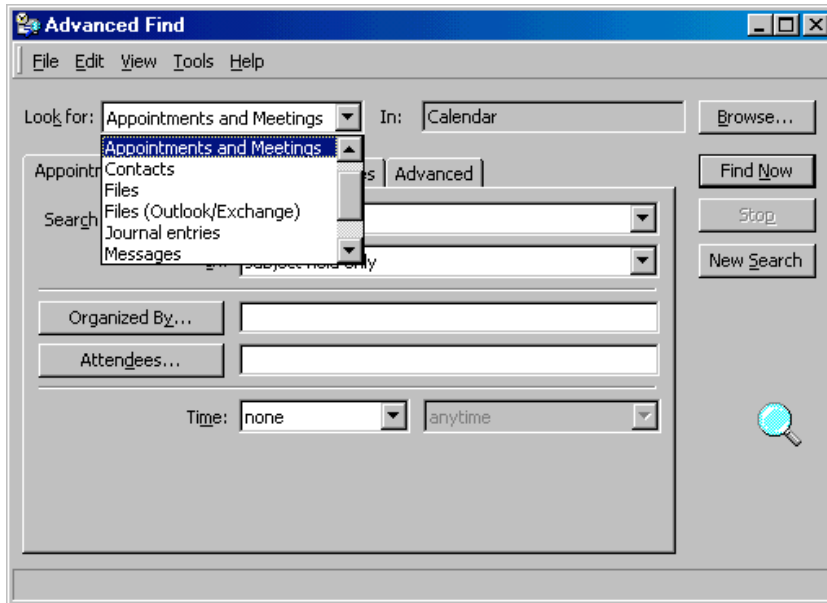


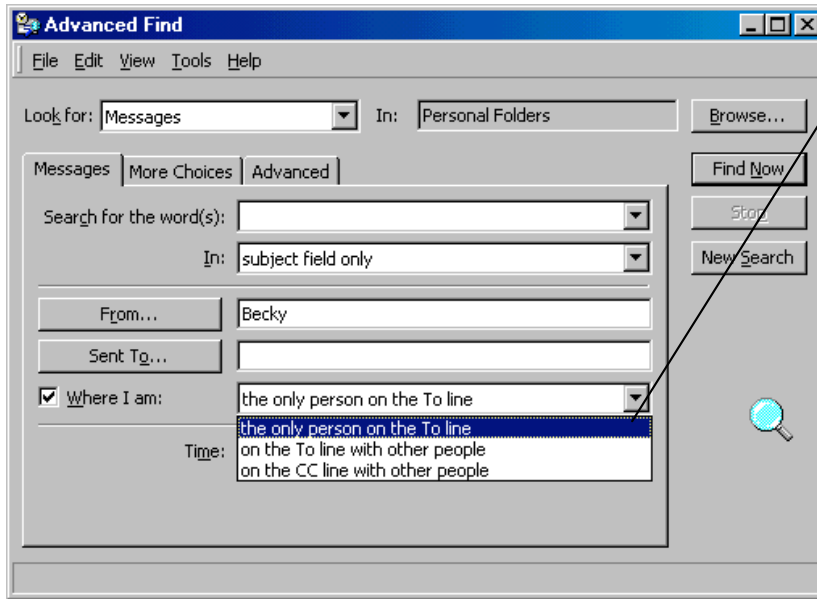
Microsoft Outlook "Finder" feature design



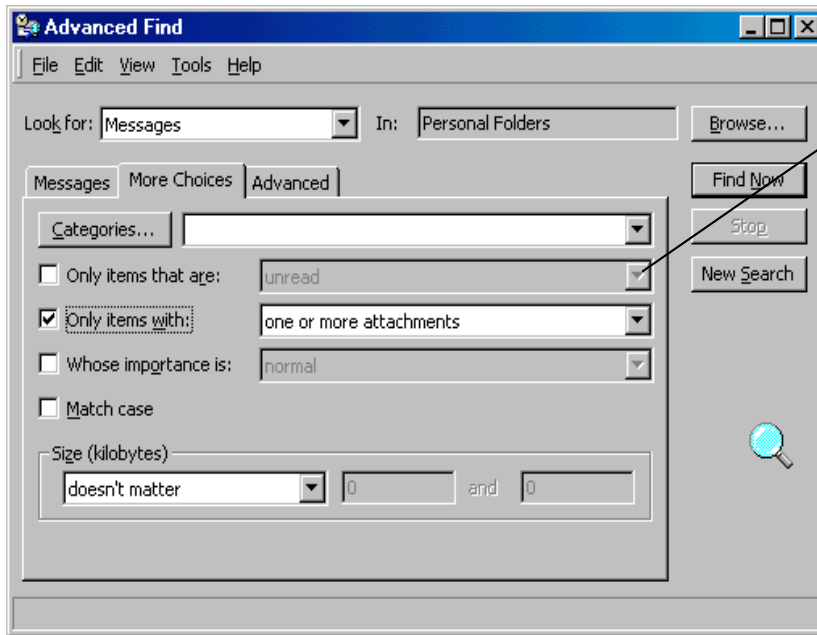
Entry point for Outlook "Find" feature/module. In Outlook 97, this was the first screen the user would see after clicking "Find." In later versions, users see a pared down page of search options (not my design), and Entry point for Outlook "Find" feature. In Outlook 97, this was the first screen the user would see after clicking "Find." It was designed so users could perform what I felt was the most common search scenarios. In later versions, users see a pared down page of search options (not my design), and then can click "Advanced" to see this functionality.



The Find feature had to be able to find every kind of Outlook item. The first and second "tabs" of search options changed depending upon the selection in the "Look for" drop down box.



The “Where I am” control is not a standard Office user interface. I designed this because I felt strongly that the Find interface in the previous version of the e-mail client was confusing. I wanted to state clearly and without jargon, how the user could narrow the search options for e-mail addressed to him/her. The idea came to me on the commute home one night!



The “More Choices” tab was designed to provide the next most common searching scenarios. These scenarios and the matching UI options change depending on the selection of the item type.

Advanced Find

File Edit View Tools Help


Look for: In:


















Contacts | More Choices | Advanced

Search for the word(s):

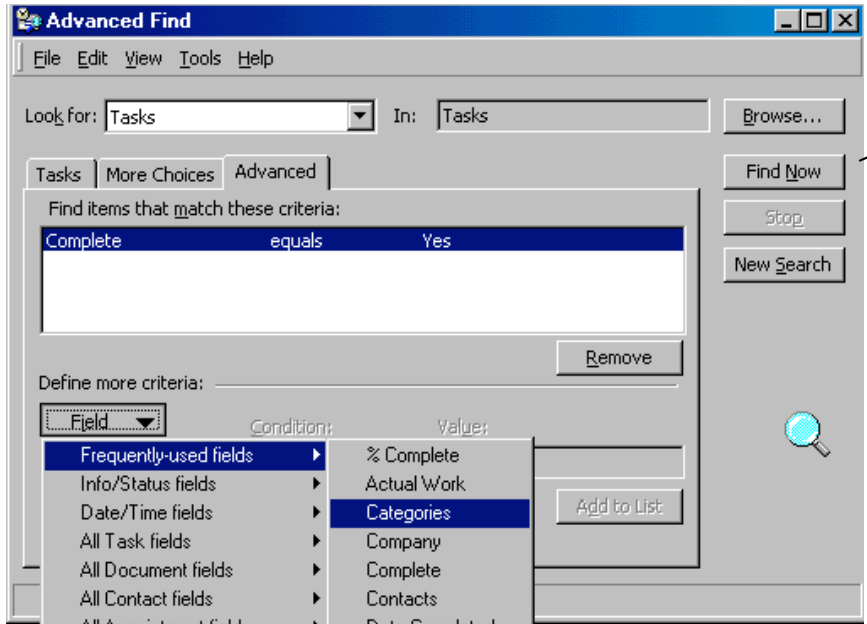
In:

Time:

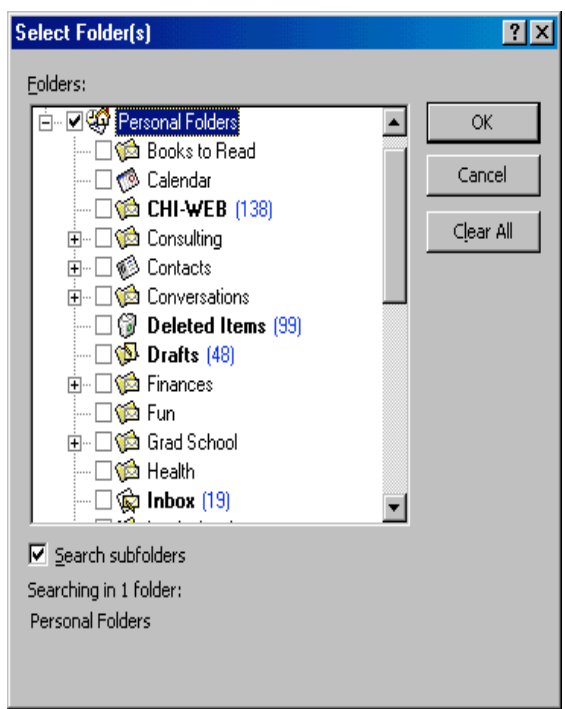


			Full Name	Company	File As 	Bu 
			Dr. Rick McManus		Dr. Rick McManus	(4)
			Claire McDonald		McDonald, Claire	
			McDougall, Constance		McDougall, Constance	
			Allison Mckenzie		Mckenzie, Allison	

This screen shows the results of a Contacts search. The window is resizable and searches can be saved and reused again. The results view, along with all others in Outlook, is customizable.



The "Advanced" tab allowed searching for every item and field type in Outlook with full Boolean operations support. Many of the design issues we dealt with came from technical limitations of using the MAPI protocol.



Users can select any combination of Outlook folder locations in which to search.